

INDUSTRIAL MAYA

CROSS OCEAN



Industrial Maya

Built 2012

MAIN PARTICULARS

General Info

Type	Box Hold MPP Tweendecker
Class	Bureau Veritas
DWT	10049 mt
Draft	7.82m
LOA	116.26 m
Beam	17.80 m
Max. Speed	About 14.0 knots

Capacities

Cargo Holds	11581 cbm bale
Containers	404 TEU
Cranes	2 x 80 mt = 160mt combined
Strengths	18 mt/ m2 on Tanktop 3.5 mt / m2 on tweendeck 2.6 mt / m2 on hatchcovers

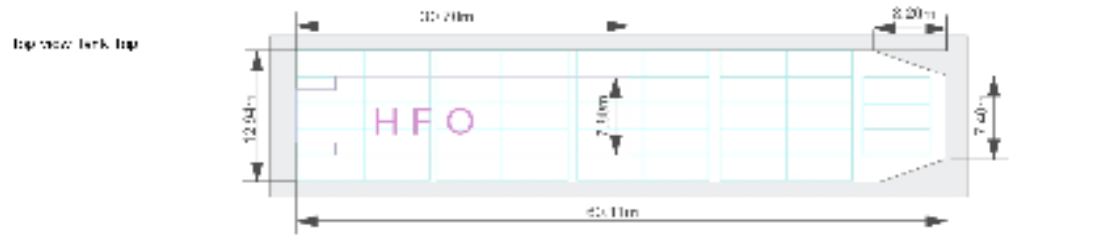
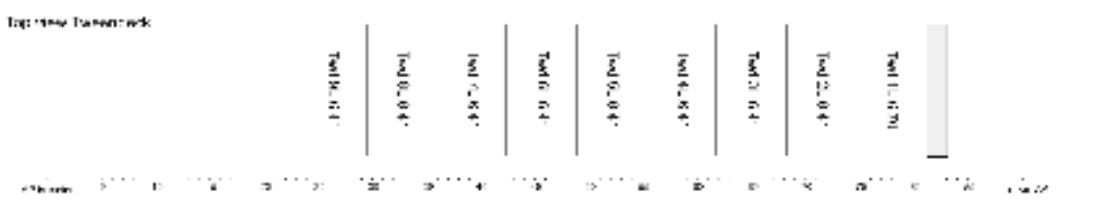
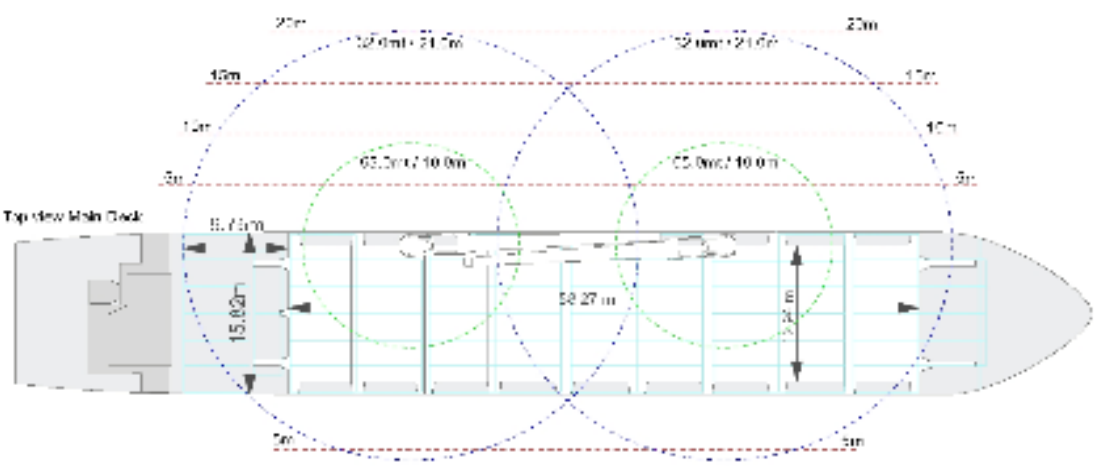
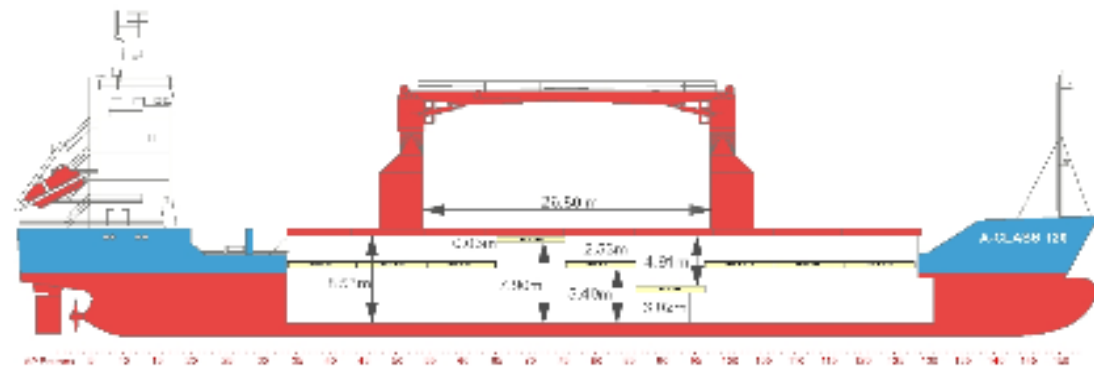
Special Features

IMO fitted

Australia fitted

All above details are given in good faith but without guarantee. This description may not be used as basis for time charter parties or booking notes. If you like to receive further information please contact our sales team at

www.crossocean.org



All above details are given in good faith but without guarantee. This description may not be used as basis for time charter parties or booking notes. If you like to receive further information please contact our sales team at